

ELECTRICITY GENERATING AUTHORITY OF THAILAND

Supplemental Notice No. 3

Invitation to Bid No. SNS1-S-01

**Supply and Construction of 230 kV Srinagarind 2 Substation
and Expansion of 230 kV Srinagarind Substation**

**Transmission System for Hydro-Floating Solar Hybrid Project
Srinagarind Dam Unit 1**

The attached Supplemental Notice shall be considered as part of the bidding documents No. SNS1-S-01.

As acknowledgement of receipt that all additions, deletions and revisions contained in this Supplemental Notice are incorporated into the above bidding documents, Bidder is requested to sign and return this acknowledgement via email address : pirada.s@egat.co.th within three (3) days from the date of the announcement of this Supplemental Notice on <http://www4.egat.co.th/fprocurement/biddingeng>.

The original acknowledgement which is manually signed in ink by a person or persons duly authorized shall be included in the proposal to be submitted on the bid opening date.

ELECTRICITY GENERATING AUTHORITY OF THAILAND

July 18, 2025

ACKNOWLEDGEMENT

This undersigned Bidder hereby certifies that the additions, deletions and revisions set forth in this Supplemental Notice to Invitation to Bid No. SNS1-S-01 are incorporated as part of the above bidding documents and will be fully included in any bids which he may submit.

Signed _____

Title _____

Company _____

Date _____

ELECTRICITY GENERATING AUTHORITY OF THAILAND

SUPPLEMENTAL NOTICE NO. 3

INVITATION TO BID NO. SNS1-S-01

SUPPLY AND CONSTRUCTION OF 230 kV SRINAGARIND 2 SUBSTATION
AND EXPANSION OF 230 kV SRINAGARIND SUBSTATION
TRANSMISSION SYSTEM FOR HYDRO-FLOATING SOLAR
HYBRID PROJECT SRINAGARIND DAM UNIT 1

The following supplemental information is hereby given for the above described Invitation:

Volume I of IV

1. Section A : Invitation to Bid

Postpone the bid opening date from July 15, 2025 to ***August 7, 2025***.

Volume II of IV

2. Section C : Price Schedule and Proposal Data

Revise Price Schedule No. 3AB25 with the revised excel files of Price Schedule attached.

Volume IV of IV

3. Section J : Drawings

Replace the following Drawings with the revised ones with Rev.1 attached.

Dwg. No.

- 1) SNR-S-6 sheet 04/04 Rev -
- 2) TP-E-10.20 sheet -/- Rev -

Bid submitted must be in accordance with this Notice. Receipt of this Notice shall be acknowledged by the Bidder on the proposal included in the Bidding Documents in the space provided on page Part 3 - C16, Article C-5. Supplemental Notices.

ELECTRICITY GENERATING
AUTHORITY OF THAILAND

..... July 18, 2025

INVITATION TO BID NO. SNS1-S-01

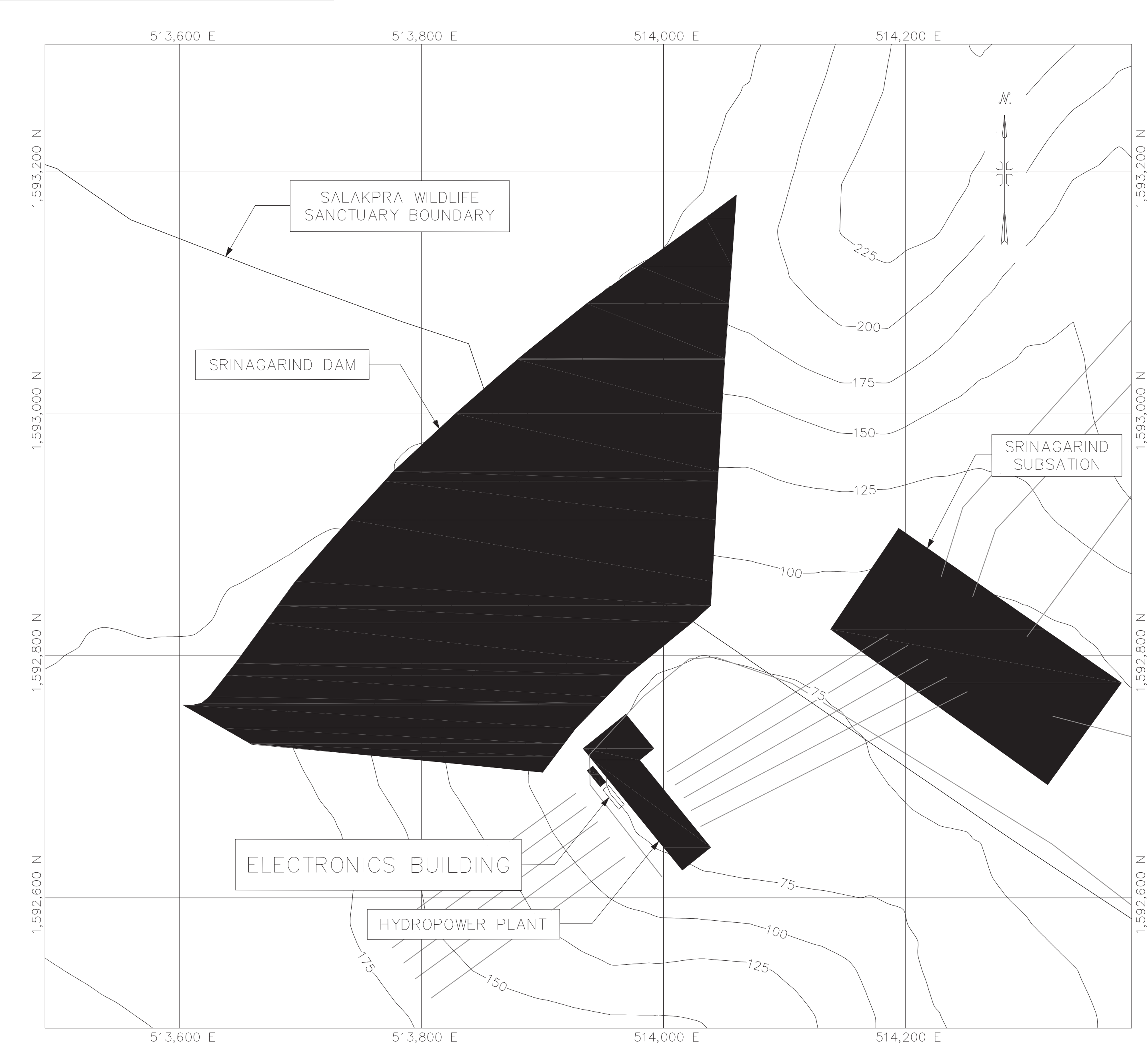
3AB25 : Fault Recording System

SUPPLY AND CONSTRUCTION FOR EXPANSION OF 230 KV SRINAGARIND SUBSTATION

TRANSMISSION SYSTEM FOR HYDRO-FLOATING SOLAR HYBRID PROJECT SRINAGARIND DAM UNIT 1

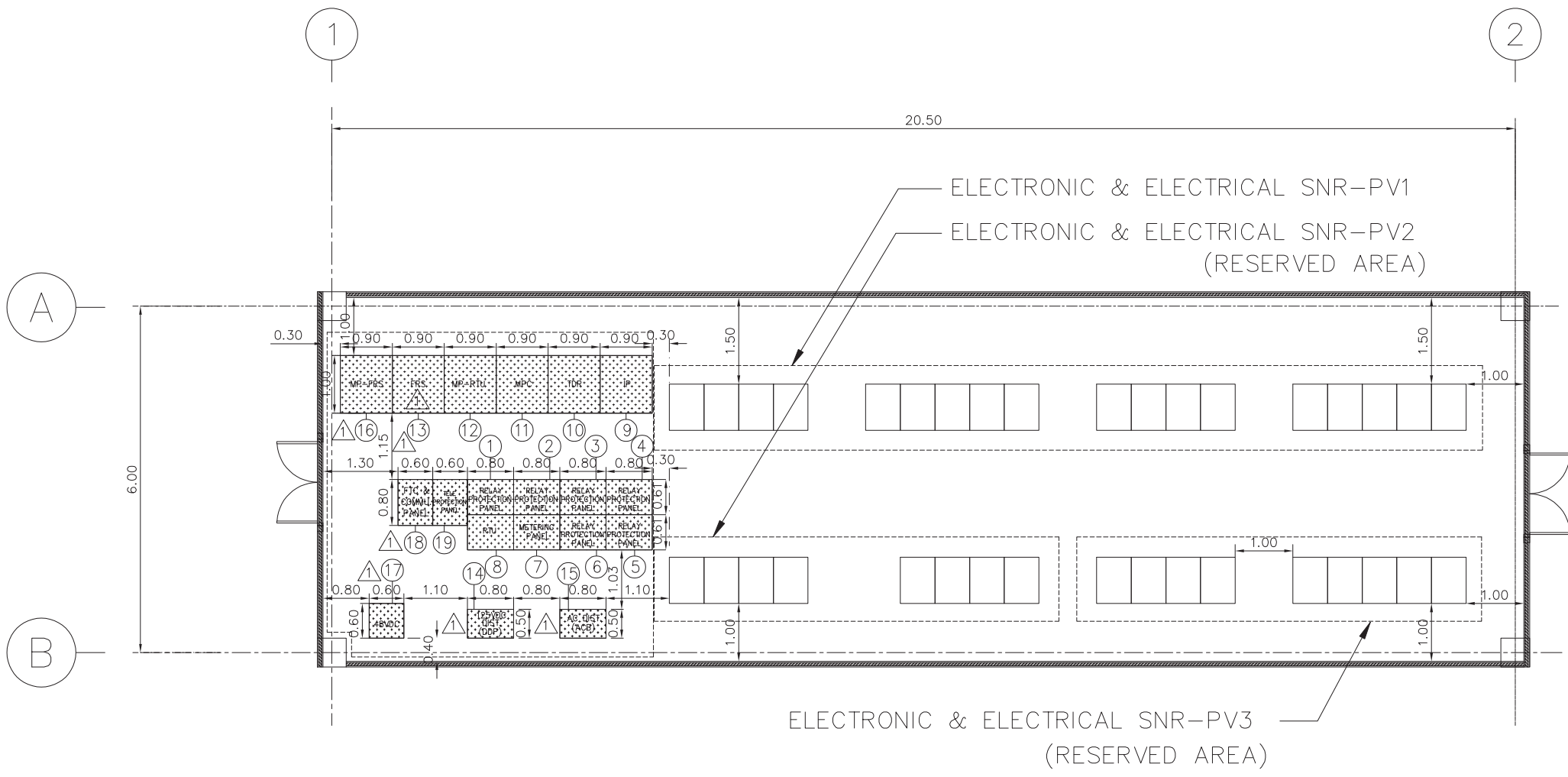
Item No.	Description	Drawing No. / Reference No.	Qty.	Unit	Currency	Supply of Equipment				Local Transportation, Construction and Installation (excluding VAT) Baht		
						Foreign Supply		Local Supply				
						CIF Thai Port		Ex-works Price (excluding VAT) Baht				
						Unit Price	Amount	Unit Price	Amount	Unit Price	Amount	
3AB25-1	<i>FAULT RECORDING SYSTEM, 48 ANALOG INPUT, 144 DIGITAL INPUT.</i>	Installed at Electronics Building. Drawing Nos. SNR-E-1.1 SH.1-2 and Scope of Work	1	SET							XXXXX	XXXXX
3AB25-2	Cost of Local Transportation, Construction and Installation for Item No. 3AB25-1		Lump sum	Lump sum		XXXXX	XXXXX	XXXXX	XXXXX			
Total Price for Schedule 3AB25								Baht		Baht		

1	04	SNR-S-6	DWG.NO.
REV.	04		



LOCATION OF ELECTRONICS BUILDING
SCALE 1 : 2,500

ITEM	DESCRIPTION	QTY.	PURCHASING ORDER AND SCHEDULE NO.	MANUFACTURER	REMARK
ADDITIONAL FOR JOB NO.SNS1-01-S03 (BY CONTRACTOR)					
①-⑥	RELAY PROTECTION PANEL (SWING RACK TYPE)	6	-	-	ELECTRONICS BUILDING
⑦	METERING PANEL (SWING RACK TYPE)	1	-	-	ELECTRONICS BUILDING
⑧	RTU PANEL (SWING RACK TYPE)	1	-	-	ELECTRONICS BUILDING
⑨	INTERPOSING PANEL (IP)	1	-	-	ELECTRONICS BUILDING
⑩	TRANSDUCER PANEL (TDR)	1	-	-	ELECTRONICS BUILDING
⑪	MARSHALLING PANEL FOR CONTROL (MPC)	1	-	-	ELECTRONICS BUILDING
⑫	MARSHALLING PANEL FOR RTU (MP-RTU)	1	-	-	ELECTRONICS BUILDING
⑬	FAULT RECORDER PANEL (FRS)	1	-	-	ELECTRONICS BUILDING
⑭	DC DISTRIBUTION BOARD (TYPE L) (DDP)	1	-	-	ELECTRONICS BUILDING
⑮	AC DISTRIBUTION BOARD (ACB)	1	-	-	ELECTRONICS BUILDING
⑯	MARSHALLING PANEL FOR FRS (MP-FRS)	1	-	-	ELECTRONICS BUILDING
⑰	48VDC LOAD CENTER PANEL	1	-	-	ELECTRONICS BUILDING
⑱	FTC & COMMUNICATION PANEL	1	-	-	ELECTRONICS BUILDING
⑲	TELE-PROTECTION PANEL	1	-	-	ELECTRONICS BUILDING



ELECTRONICS BUILDING PLAN
SCALE 1 : 100

NOTES

- ALL DIMENSIONS ARE IN METERS, EXCEPT AS NOTED.
- ALL METALLIC PARTS OF ELECTRICAL EQUIPMENT OR PANELS SHALL BE CONNECTED TO MAIN GROUNDING SYSTEM WITH 4/0 AWG. BARE COPPER CONDUCTOR OR SUITABLE CABLES.
- THE CONTRACTOR SHALL SURVEY THE ROUTE OF CABLE WIRING ON SITE. THE CONTRACTOR SHALL REVISE THE POSITION OF PANELS TO BE SUITABLE FOR INSTALLATION AND PROPOSE THE DRAWING TO EGAT FOR APPROVAL.
- THE CONTRACTOR SHALL DESIGN, SUPPLY AND INSTALL THE POWER SUPPLY OF ALL ELECTRICAL EQUIPMENT OR PANELS FOR JOB NO.SNS1-01-S03 AND SUBMIT THE DIAGRAM DRAWING TO EGAT FOR APPROVAL. ESPECIALLY, THE POWER SUPPLY FOR AC DISTRIBUTION BOARD AND DC DISTRIBUTION BOARD.
- THE TYPE OF CABLES FOR THE MAIN POWER SUPPLY FOR AC DISTRIBUTION BOARD AND DC DISTRIBUTION BOARD SHALL BE 1 CORE-COPPER 750V POWER CABLES. THE SIZE AND QUANTITY OF CABLES SHALL BE DESIGN BY CONTRACTOR.

ได้ตรวจสอบแล้ว
ลงชื่อ.....**KORANEE P.**.....
(นางสาวกรณีย์ พงษ์คุ้มภัย)
วันที่.....**24 Jun 2025**.....
กองวิศวกรรมสถานไฟฟ้าแรงสูง

REFERENCE DRAWINGS

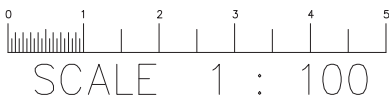
SRINAGARIND SUBSTATION

- 230kv. SINGLE LINE DIAGRAM.....DWG.NO.SNR-S-1-01/05
- 230kv. SINGLE LINE DIAGRAM.....DWG.NO.SNR-S-1-02/05
- GENERAL ARRANGEMENT PLAN.....DWG.NO.SNR-S-2-01/02
- BUS STRUCTURE PLAN.....DWG.NO.SNR-S-3-01/02
- CONTROL ROOM EQUIPMENT LAY-OUT.....DWG.NO.SNR-S-6-01/04

LEGEND

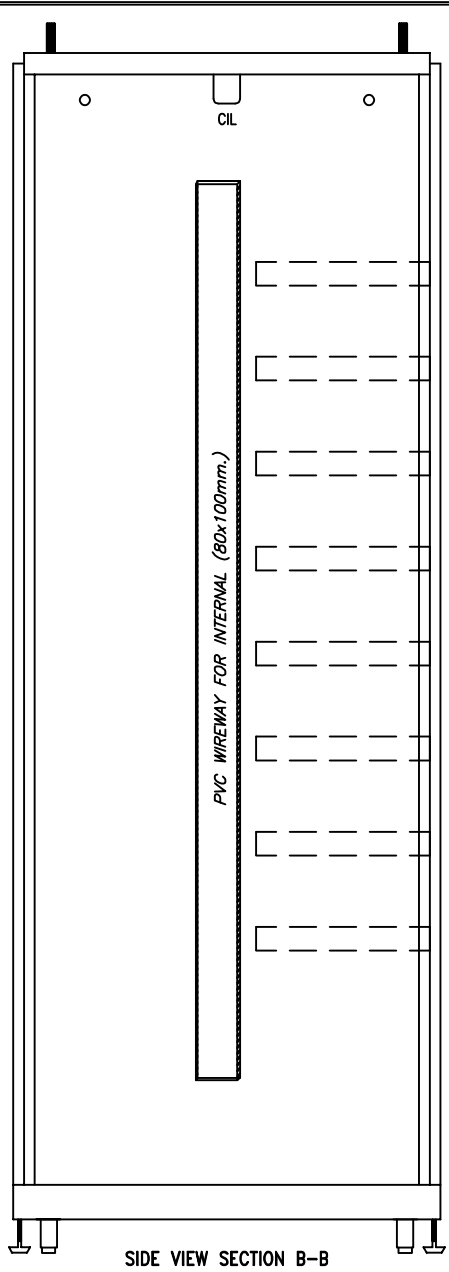
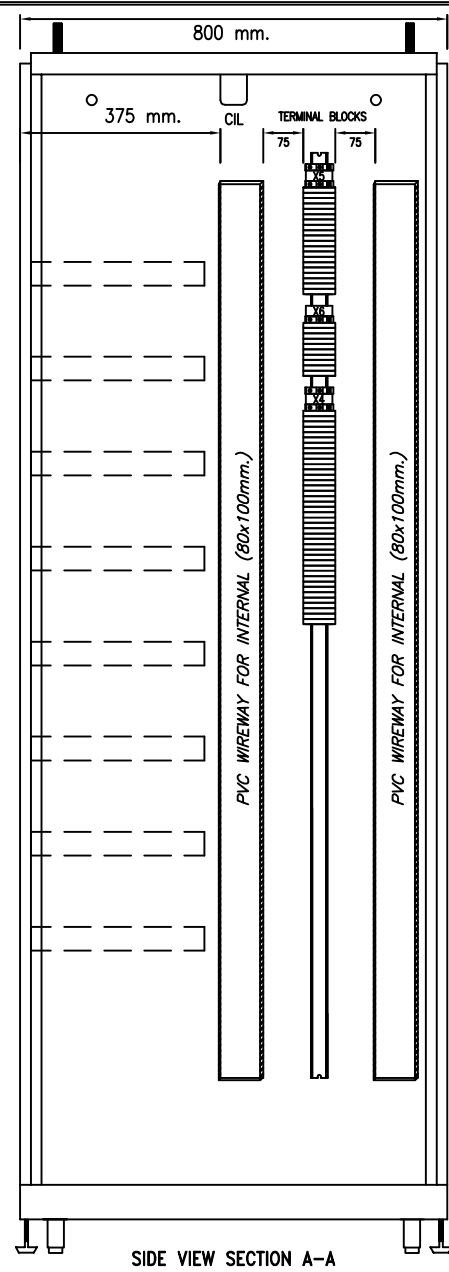
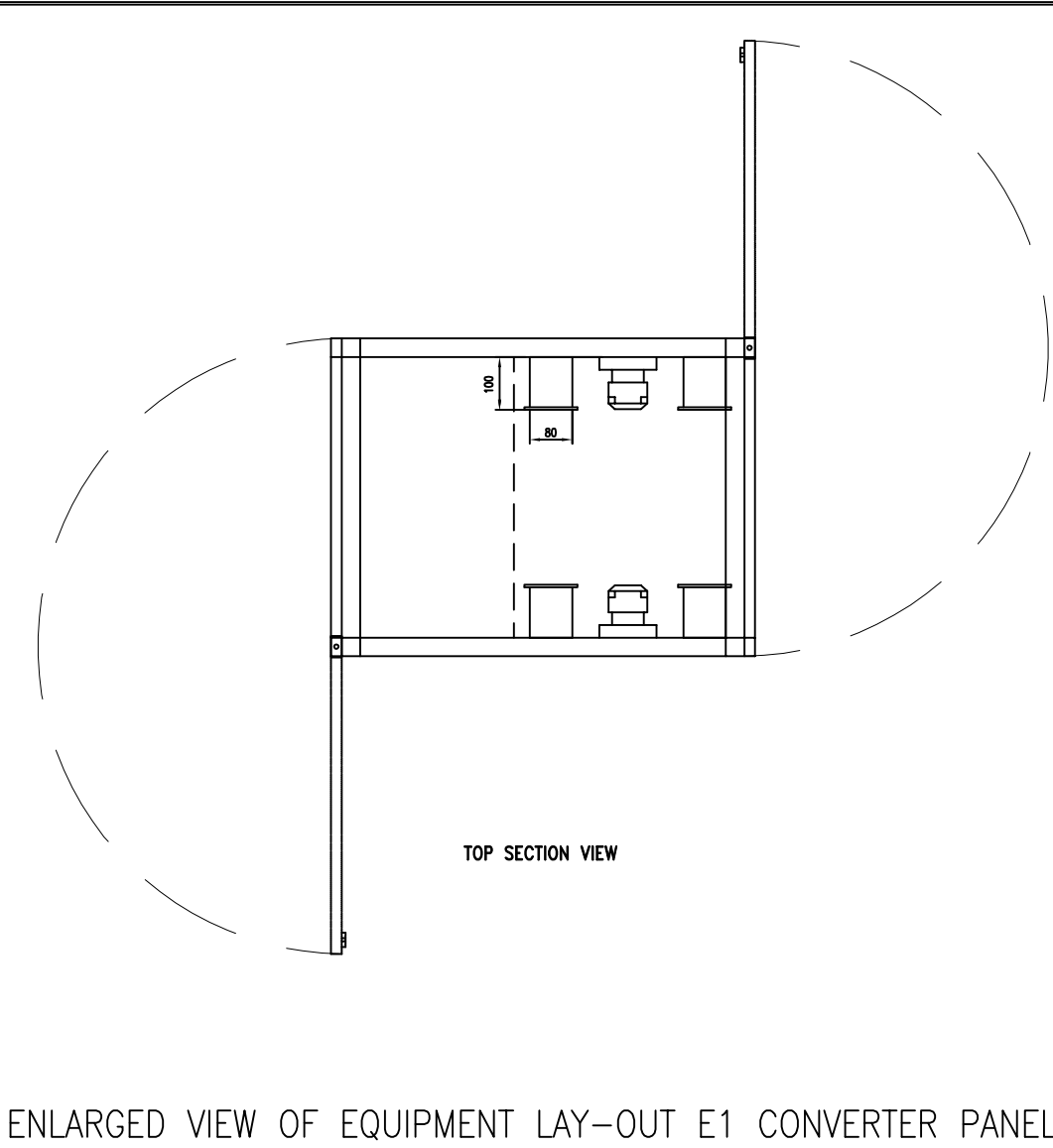
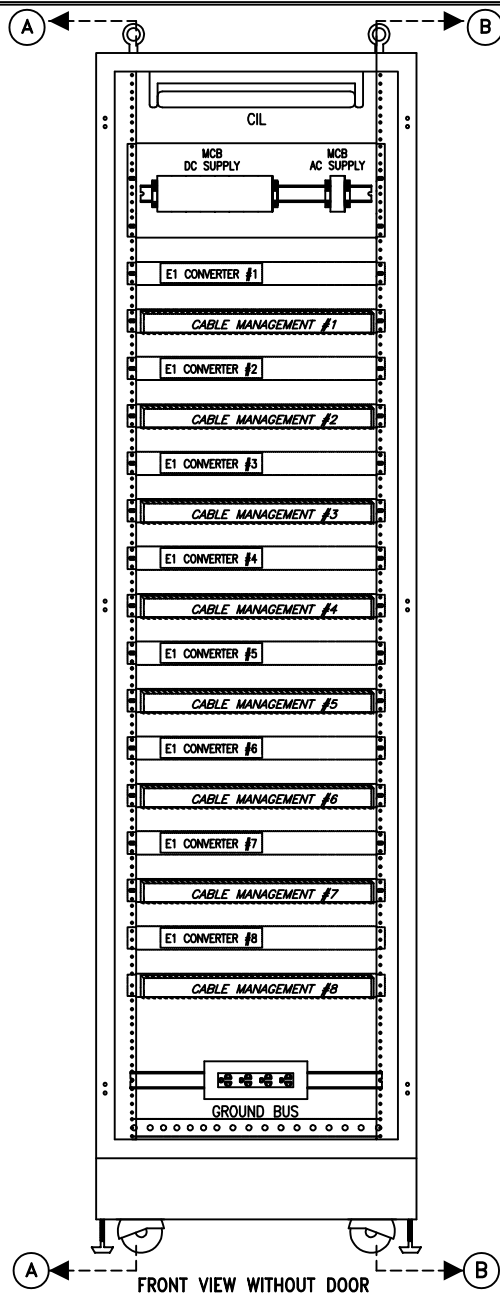
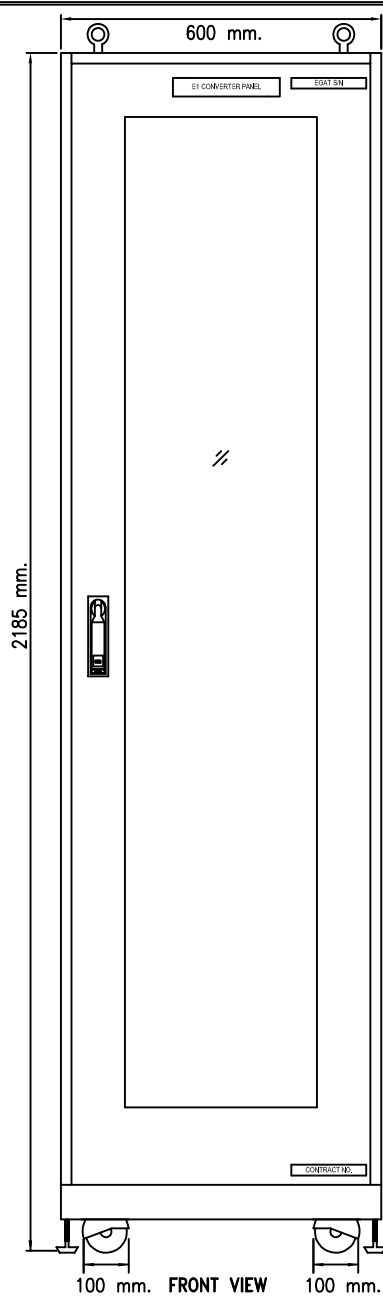
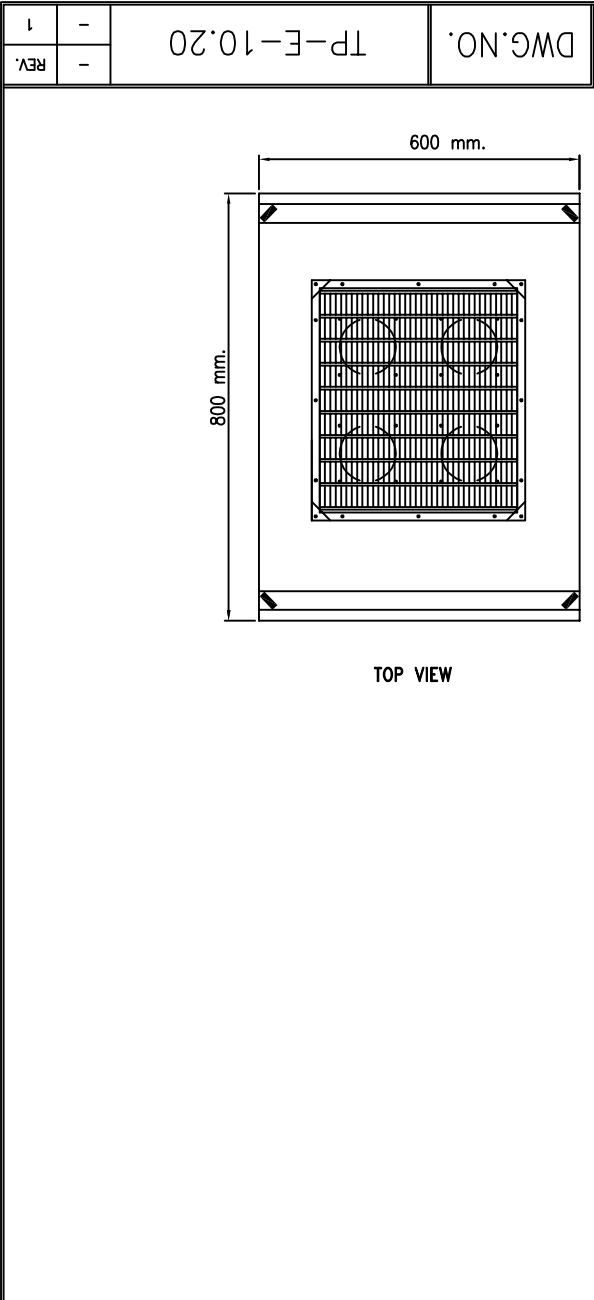
- EXISTING
- ADDITIONAL FOR JOB NO.SNS1-01-S03 (BY CONTRACTOR)

FOR BIDDING ONLY



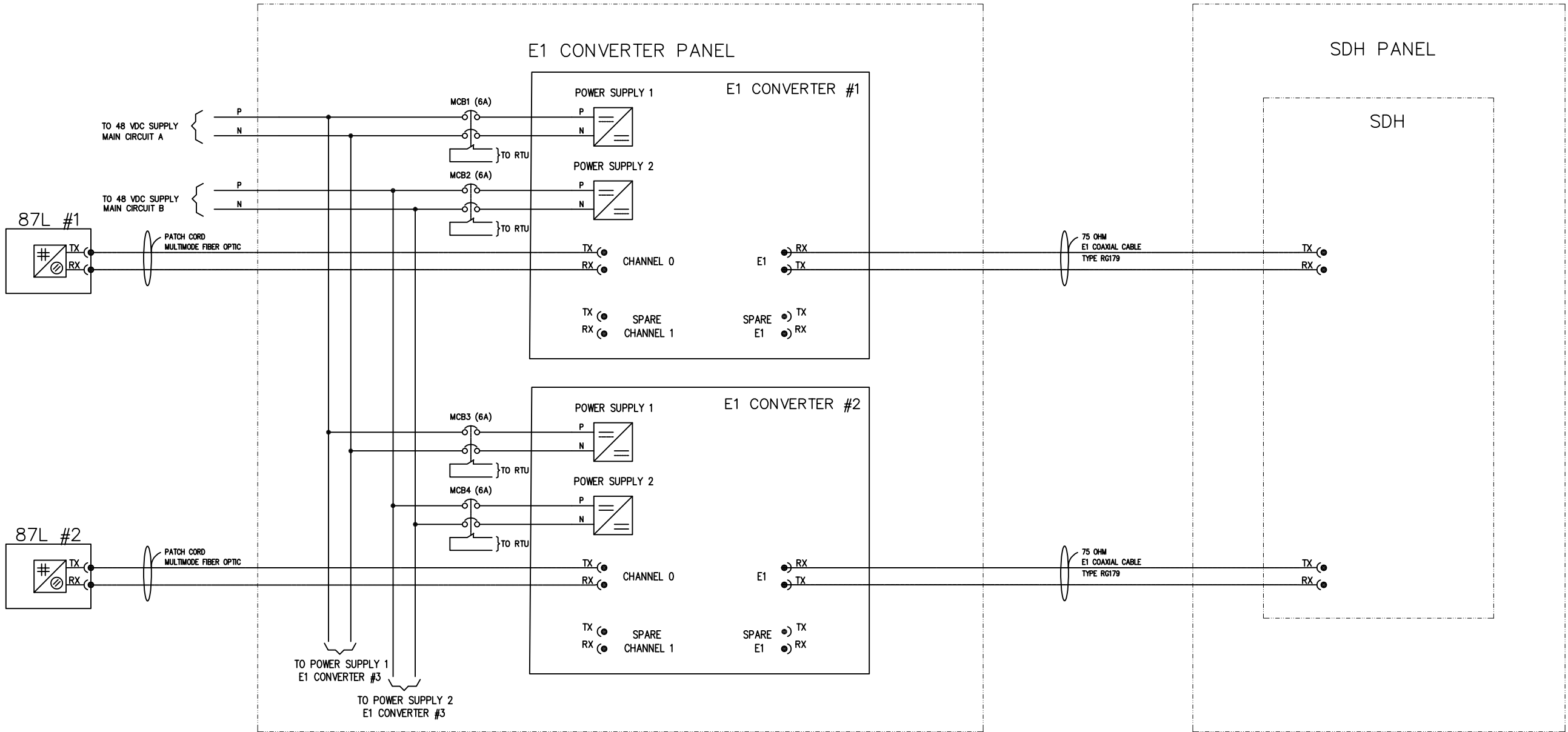
											ELECTRICITY GENERATING AUTHORITY OF THAILAND			
											DRAWN	GITSANA	RECOMMENDED AND VALIDATED	DRAWING NAME
											DESIGNED		CHIEF,SUBSTATION ENGINEERING DEPARTMENT	SRINAGARIND SUBSTATION
											VERIFIED		CONCURRED	DESCRIPTION OF DETAIL DRAWING
											APPROVED		ASSISTANT DIRECTOR,TRANSMISSION SYSTEM ENGINEERING DIVISION-2	ELECTRONICS BUILDING EQUIPMENT LAY-OUT
											JOB NO.		REPLACING DWG.NO.	JOB NO.
											SNS1-01-S03			SNS1-01-S03
											DATE		DWG.NO.	DWG.NO.
													SNR-S-6	SNR-S-6
											04	REV.	04	1

REV.NO.	JOB NO.	DESCRIPTION	DRAWN	DESIGNED	VERIFIED	VALIDATED	RECOMMENDED	CONCURRED	APPROVED	DATE
0	SNS1-01-S03	CANCEL MP-TEL PANEL, ADD FRS PANEL AND MP-FRS PANEL, ADD 48VDC LOAD CENTER PANEL, FTC & COMMUNICATION PANEL AND TELE-PROTECTION PANEL, AND RELOCATE RELATED PANEL	-	-	-	-	-	-	-	-
0	SNS1-01-S03	ADDITIONAL 230kv LINE No.1 AND No.2 TO SRINAGARIND 2 AND REPLACE THE EQUIPMENT FOR 230kv BUS COUPLING	-	-	-	-	-	-	-	-



THE CONNECTION AMONG RELAY PANEL, E1 CONVERTER PANEL AND SDH PANEL

CONTROL AND PROTECTION SYSTEM TELECOMMUNICATION SYSTEM



TERMINAL	AMOUNT AT LEAST	FUNCTION
X4	40 PCS.	RTU
X5	20 PCS.	DC SUPPLY
X6	10 PCS.	AC SUPPLY

E1 CONVERTER PANEL (1 EACH)		
1. E1 CONVERTER (C37.94) SHALL BE MULTIMODE TYPE. EACH E1 CONVERTER SHALL BE MASTER CLOCK AND SHALL HAS CLOCK SYNCHRONIZING FUNCTION. THE POWER SUPPLY SHALL BE 48 VDC ± 20%.		
2. ONE (1) SET OF MULTIMODE OPTICAL FIBER PATCH CORD CABLE FOR CONNECTING BETWEEN LINE CURRENT DIFFERENTIAL RELAY (87L) AND E1 CONVERTER SHALL BE SUPPLIED AND INSTALLED FOR EACH E1 CONVERTER. SEE S6 DRAWINGS FOR THE LENGTH OF PATCH CORD CABLES.		
3. ONE (1) SET OF E1 COAXIAL CABLE FOR CONNECTING BETWEEN E1 CONVERTER AND SDH SHALL BE SUPPLIED AND INSTALLED FOR EACH E1 CONVERTER. SEE S6 DRAWINGS FOR THE LENGTH OF COAXIAL CABLES AND THE LENGTH SHOULD NOT EXCEED 30 METERS. THE CONNECTOR TYPE OF THE COAXIAL CABLE AT ONE SIDE SHALL BE "BNC 75 OHM PLUGS CONNECTOR" AND THE ONE AT THE OTHER SIDE DEPENDS ON THE RELAY SUPPLIED BY THE CONTRACTOR.		
4. THE SIZING OF EACH E1 CONVERTER SHALL BE 1U HIGH COMPACT SIZE AND SHALL BE SUITABLE FOR INSTALLATION IN 19" RACK CARBINET. THE MAXIMUM NUMBER OF E1 CONVERTERS AND ACCESSORIES ARE EIGHT (8) SETS PER PANEL. SEE E2 DRAWINGS FOR THE DETAIL.		
5. IN CASE THE E1 CONVERTER HAS ONLY 1 PORT OF POWER SUPPLY, TWO (2) SETS OF MCBs FOR EACH E1 CONVERTER SHALL BE SUPPLIED. ONE (1) SET FOR 48 VDC SUPPLY MAIN CIRCUIT A, THE OTHER FOR SPARE.		
6. THE COLOR OF CABINET SHALL BE DARK GREY (COLOR CODE # RAL7036)		
REFERENCE : TP-E-10.19 SPECIFICATION NO.1002 SPECIFICATION NO.1005 SPECIFICATION NO.1008 DWG.NO. XXX-E2 DWG.NO. XXX-E6 DWG.NO. XXX-S6		

ได้ตรวจสอบแล้ว
ลงชื่อ.....
(นายรุตทัญ รุจิธัญธาร)
วันที่..... 19 Mar 2025
กองวิศวกรรมระบบควบคุมและป้องกัน

REV.NO.	JOB NO.	JOB DESCRIPTION	DRAWN	DESIGNED	VERIFIED	VALIDATED	RECOMMENDED	CONCURRED	APPROVED	DATE
1	-	REVISE SIZE AND DETAILS OF CABINET								
-	-	TYPICAL DRAWING FOR EQUIPMENT LAY-OUT & THE CONNECTION AMONG E1 CONVERTER PANEL, RELAY PANEL AND SDH PANEL								

ELECTRICITY GENERATING AUTHORITY OF THAILAND										DRAWING NAME		
DRAWN H. CHINDARHA			VALIDATED			CHIEF, CONTROL AND PROTECTION SYSTEM ENGINEERING DEPARTMENT				TYPICAL DRAWING		
DESIGNED H. CHINDARHA			RECOMMENDED			ASSISTANT DIRECTOR, TRANSMISSION SYSTEM ENGINEERING DIVISION-1				DESCRIPTION OF DETAIL DRAWING		
VERIFIED			CONCURRED			DIRECTOR, TRANSMISSION SYSTEM ENGINEERING DIVISION				DETAILS OF E1 CONVERTER PANEL		
APPROVED						DATE				JOB NO.	REPLACING DWG.NO.	DWG.NO. TP-E-10.20
						ASSISTANT GOVERNOR - TRANSMISSION SYSTEM DEVELOPMENT						- 1